

CERTIFIED LAND CORNER RECORDATION

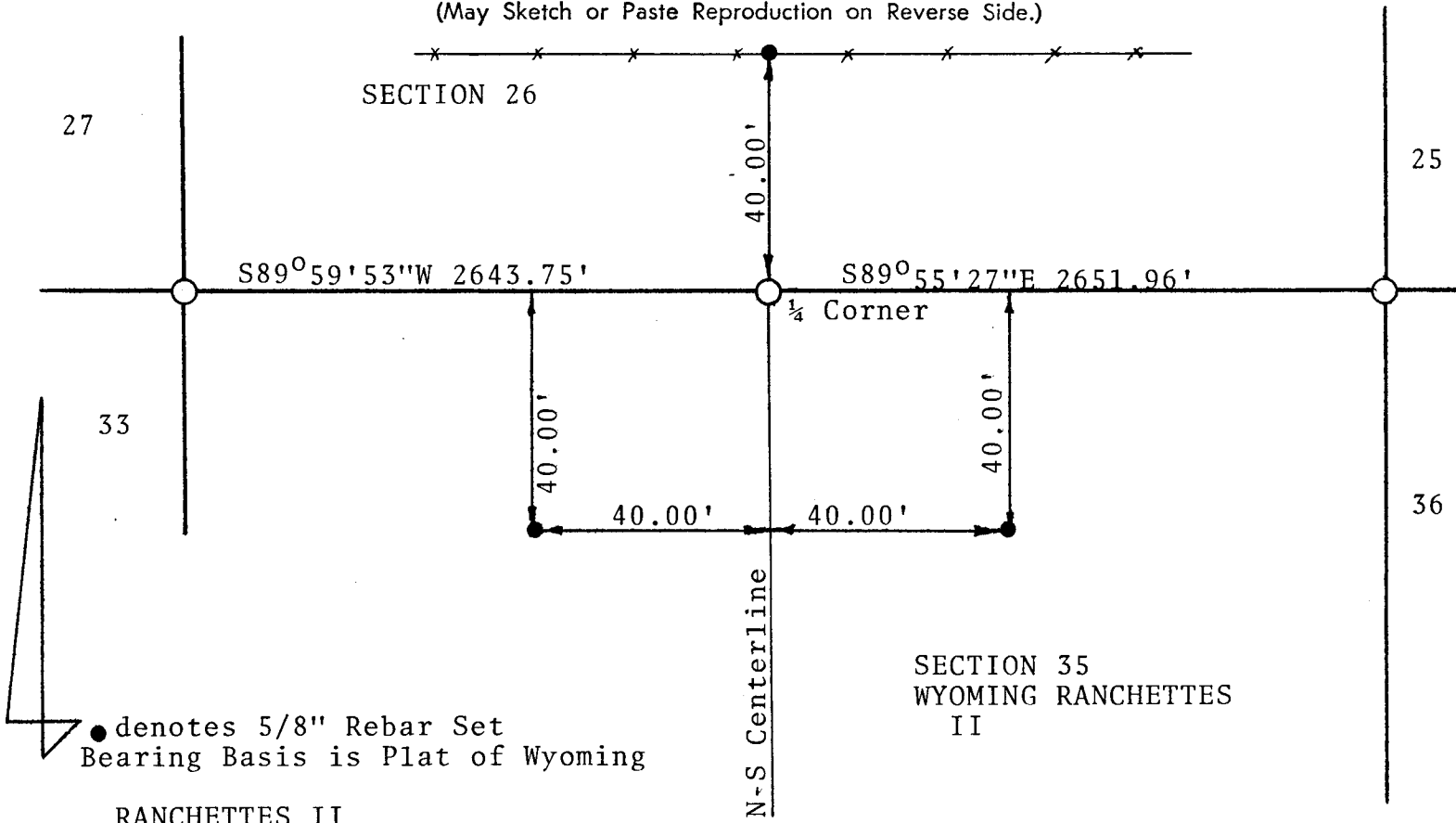
DESCRIPTION OF CORNER EVIDENCE FOUND, AND ORIGINAL RECORD (if known)

$\frac{1}{4}$
 $\frac{26}{35}$
 G.L.O. Record-Granite Boulder 16" X 9" X 5"
 Set in 1870
 Found-Notched Stone, Fitting G.L.O. Record
 Description
 T.15N., R.66W., 6th P.M.

DESCRIPTION OF MONUMENT AND ACCESSORIES ESTABLISHED TO PERPETUATE THE ORIGINAL LOCATION OF THIS CORNER:

At the Corner- Set a 2" dia. X 30" long iron pipe with Brass Cap
 Accessories Raised Rock Mound Around Monument

SKETCH, WITH COURSE AND DISTANCE TO ADJACENT CORNER IF DETERMINED IN THIS SURVEY. (May Sketch or Paste Reproduction on Reverse Side.)



● denotes 5/8" Rebar Set
Bearing Basis is Plat of Wyoming

RANCHETTES II

I, William Concrey certify that I have carefully performed or reviewed the work done on the diagrammed corner as reported on this recordation form and approve the same.

William Concrey
Signature of Surveyor

Wyoming L.S. No. 577
Registration No.

STATE OF WYOMING,
Office of Clerk and Recorder,
County of Sarasota

This "corner record" was filed for record on the 20 day of October, 1976, was noted on the cross-index plat and is assigned page No. _____, in book No. _____

James C. Mitchell
County Official

Cross Index No. <u>V 19</u>	T. <u>15</u>	R. <u>66</u>	Mer.
_____	T. _____	R. _____	Mer.
_____	T. _____	R. _____	Mer.
_____	T. _____	R. _____	Mer.
_____	T. _____	R. _____	Mer.
_____	T. _____	R. _____	Mer.
_____	T. _____	R. _____	Mer.

The State of Wyoming }
County of Laramie } SS

This instrument was filed for record
at 1153 o'clock P.M. on the
20th day of Oct
A. D. 19 76 and duly recorded in
book on page .

Janet C. Whithead

County Clerk & Ex-Officio Register of Deeds

By Deputy